

Silences We are Familiar With – An Ode to Love

Kuik Swee Boon and Bani Haykal with T.H.E. Dance Company

19 & 20 October 2012, Esplanade Theatre Studio

In collaboration with Esplanade – Theatres on the Bay for *da:ns* festival 2012

Production information

Events in Esplanade’s *da:ns* festival 2012 included this first-time collaboration between local artists, contemporary dance choreographer Kuik Swee Boon and Indie musician Bani Haykal; creating a new work that contemplates “the limitless and omnipresent nature” of love.

Six dancers from T.H.E. Dance Company (The Human Expression) feature in this work, inspired by their personal reflections on love and life. During the performance, Bani Haykal, who composed the score, performed both music and spoken word live on stage. In the dancers outfits specially created for the show, Singapore fashion designer, Sunny Lim, explored form and movement of fabric, complemented by select pieces from his menswear label MILS.

(Synopsis and Theme)

Silences We Are Familiar With connects the physicality of dance with the intangible feelings of love. The authors believe that such connections, forged between individuals, bind us together in humanity. Exploring the ceaseless search for the human need to love and be loved, the work aims at an evening of eloquent choreography set to evocative melodies, articulated by some of Singapore's most distinctive dancers. *Silences We Are Familiar With* speaks for the heart, and from the heart.

CAST

| | | |
|------------|-------|-------------------|
| Dancer | | Jessica Christina |
| Dancer | | Yarra Iletto |
| Dancer | | Lee Mun Wai |
| Apprentice | | Sherry Tay |
| Dancer | | William Wu |
| Dancer | | Zhuo Zihao |

PRODUCTION

| | | |
|-----------------------------|-------|-------------------------------------|
| Choreographer | | Kuik Swee Boon |
| Musician & Composer | | Bani Haykal |
| Dramaturg | | Lim How Ngean |
| Set Designer | | Wong Chee Wai |
| Wardrobe & Costume Designer | | Sunny Lim (MILS) |
| Lighting Designer | | Anna Rouhu |
| Production Manager | | Zhang Shanshan |
| Stage Manager | | Shining Goh |
| T.H.E Company Manager | | Elaine Yap |
| T.H.E Front of House | | Elaine Yap, Farah Erfina, Tania Goh |

Photos of Cast and Production (appearing in the documentary photographs)



Jessica Christina



Bani Haykal



Yarra Iletto



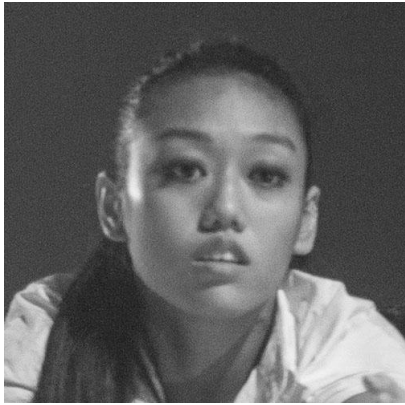
Kuik Swee Boon



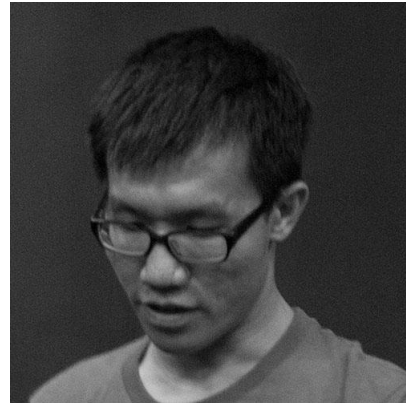
Lee Mun Wai



Anna Rouhu



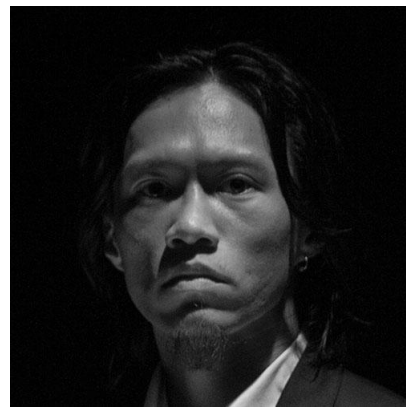
Sherry Tay



Wong Chee Wai



William Wu



Zhuo Zihao